

LEGEND

- The Order Limits
- A - Natural Gas Receiving Area
- B - Gas Turbine and Auxiliaries
- C - HRSG and Auxiliaries
- D - Steam Turbine and Auxiliaries
- E - Power Island Electrical Equipment
- F - Flue Gas Fans and Ducting
- G - Flue Gas Cooling
- H - Absorber
- I - Stripping and Reclaiming
- J - Storage and Consumables
- K - Compression and Dehydration
- L - National Grid CO2 AGI
- M - Cooling Towers
- N - Gate House, Security and Parking
- O - Administration, Control Room and Stores Buildings
- P - Raw Water Treatment
- Q - Surface Water Attenuation Pond
- Emergency Access and Egress

NOTES

Reproduced from Ordnance Survey digital map data © Crown copyright 2021. All rights reserved. Licence number 0100031673.

ISSUE PURPOSE

ENVIRONMENTAL STATEMENT

PROJECT NUMBER

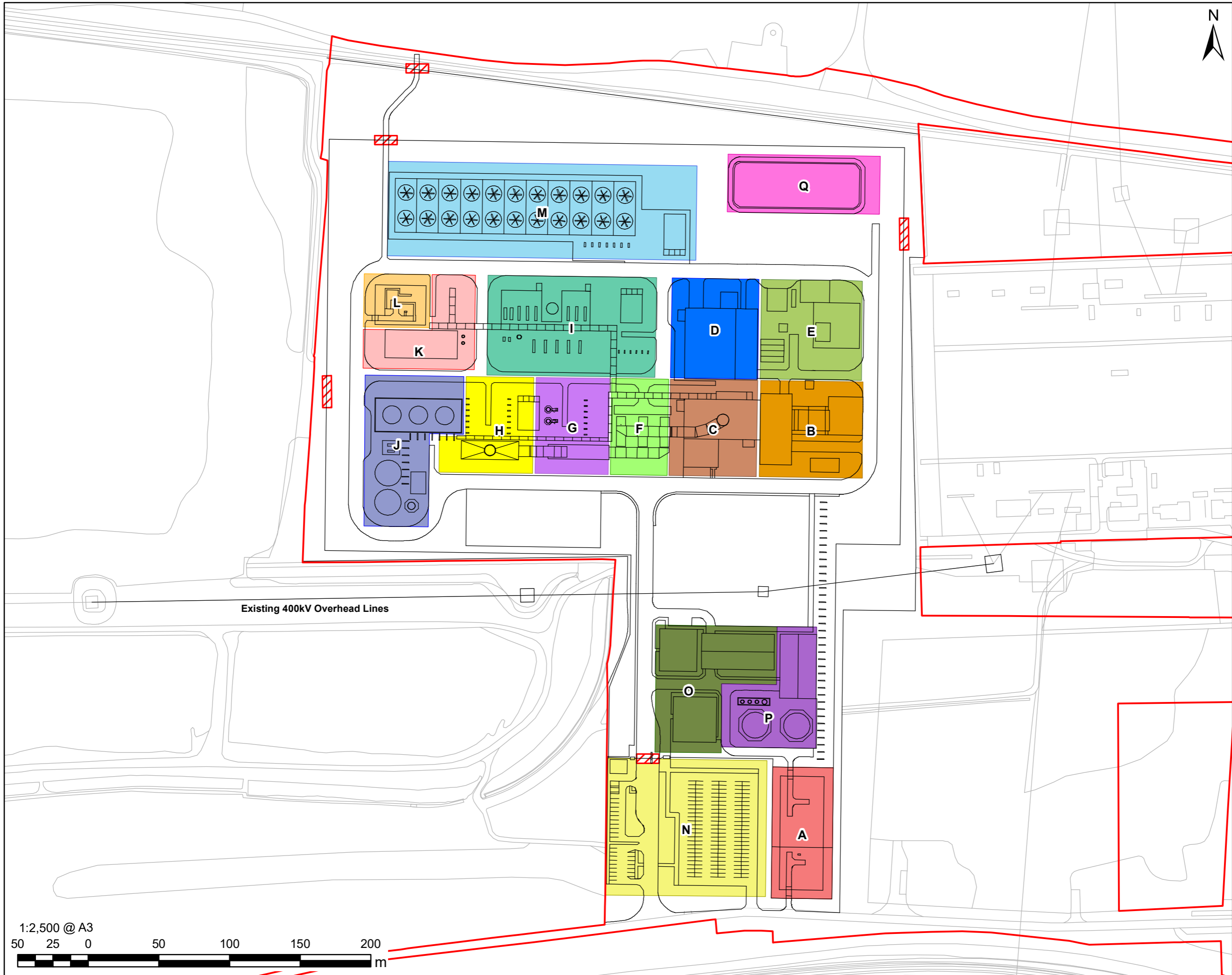
60625943

SHEET TITLE

Indicative Layout
Proposed PCC Site

SHEET NUMBER

Figure 4.1



Existing 400kV Overhead Lines

1:2,500 @ A3



This drawing has been prepared for the use of AECOM's client. It may not be used, modified, reproduced or relied upon by third parties, except as agreed by AECOM or as required by law. AECOM accepts no responsibility, and denies any liability whatsoever, to any party that uses or relies on this drawing without AECOM's express written consent. Do not scale this document. All measurements must be obtained from the stable dimensions.